

packeteyes

Online Monitoring for SOHO



Benefits to Operators










- **Increase and Retain Subscriber Base.** Increase subscriber take-up by offering compelling customer-centric services that promote loyalty and reduce churn.
- **Diversify Revenue.** Diversify and increase revenue streams by offering attractive value-added services.
- **Upsell Opportunity.** Upsell value-added services that drive subscriber usage, translating into improved revenue.
- **Service Differentiation.** Create competitive advantage by packaging appealing value-added services with other products and services
- **Extend Corporate Identity.** Green Packet offers customization services of the online monitoring portal to further extend Operator's identity to subscribers.

PacketEyes SOHO

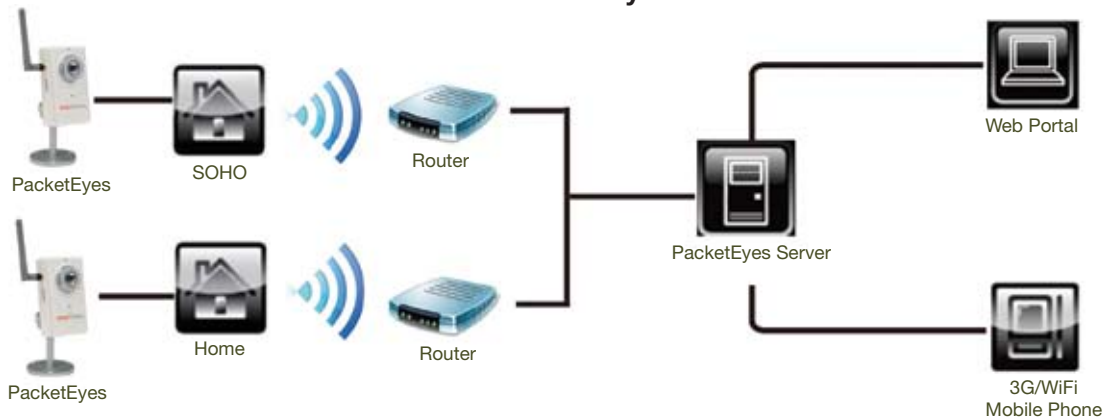
PacketEyes SOHO is a simple and cost effective wireless real-time video monitoring system for homes and small business offices. It offers subscribers the flexibility to monitor their home and office remotely, whenever and wherever they are via a 3G/WiFi enabled mobile phone and web portal. The complete solution comes with surveillance cameras and routers.



Features

-  View and record live video from multiple cameras simultaneously
-  Anytime, anywhere access from 3G/WiFi enabled mobile phone or a web portal
-  Supports full duplex, with simultaneous recording and live video streaming
-  Video playback by date and time
-  Multi-user access with up to 5 concurrent login
-  Motion detection alert via SMS notification
-  Secured access with password authentication
-  Off-site recording ensures no data loss during break-in
-  Automatic reconnection to server upon recovery of connection loss

How PacketEyes Works



Live video stream is sent to the PacketEyes SOHO Server via Internet broadband connection.

PacketEyes SOHO Server records and processes the data. If necessary, alerts are sent to subscribers.

Subscribers can view real time video streaming via a 3G/WiFi mobile phone or web portal.



Technical Specifications

PC/Laptop Requirements

- 1.7GHz Processor with 256MB memory or above
- Microsoft Windows XP/2000/ME/98SE
- Internet Explorer 5.x or above
- Broadband bandwidth of at least 512Kbps (1Mbps is preferred)

Surveillance Cameras

Camera

- ¼ inch color CMOS sensor
- 640 × 480 resolution
- 1.5Lux/F2.0
- AGC, AWB, AES
- Electronic shutter: 1/60 ~ 1/15,000 second
- Lens, fixed focal with fine tuning, 4.0mm, F2.0

Video

- Video compression:
 - > MPEG4 (simple profile), JPEG (still image)
 - > Supports 3GPP/ISMA RTSP
- Image quality of up to 25 Frames Per Second in CIF (640×480 PAL) resolution
- Time stamp and text overlay

Audio and Microphone

- AAC, GSM-AMR
- Microphone is Omni-directional with a frequency range of 50Hz – 16KHz
- S/N ratio >60dB

Networking

- TCP/IP, HTTP, SMTP, FTP, DHCP, UPnP, Telnet, NTP, DNS and RTSP
- Fast Ethernet port (auto negotiation)
- 802.11g Wireless LAN

Power

- Input: 100-240VAC, 50/60Hz, 0.5A
- Output: 5VDC, 2A
- Consumption: Maximum 7W

Operating Environment

- Temperature: 0-50°C/32-122°F
- Humidity: 95%RH

Mobile Phones

- Active 3G or WiFi connection
- Supports Java 1.1

Backend Servers

Web Server

- 3.2Ghz x 2 Dual Core Intel Processor
- 4GB Memory
- 2 x 160GB SCSI Hard Disk
- 24 x CDROM-RW
- 2 x 1GB Ethernet Port
- Redundant Power supply

** For redundancy support, 2 Web Servers are required.*

Database Server

- 3.2Ghz x 2 Dual Core Intel Processor
- 4GB Memory
- 2 x 160GB SCSI Hard Disk
- 24 x CDROM-RW
- 2 x 1GB Ethernet Port
- Redundant Power supply

DVR Server

- 3.2Ghz x 4 Quad Intel Processor
- 8GB Memory
- 160GB x 3 SCSI Hard Disk
- 24 x CDROM-RW
- 2 x 1GB Ethernet Port
- Redundant Power supply

Router/Wireless Router

- Standard Compliance:
 - > IEEE 802.3u 100BASE-TX Fast Ethernet,
 - > IEEE 802.11g
 - > IEEE 802.11b
- Protocol: CSMA/CD
- Virtual Server settings for application port forwarding
- Security:
 - > 64/128-bits WEP Encryption
 - > WPA
 - > WPA-PSK
 - > WPA2
 - > WPA2-PSK
- Radio Technology: IEEE 802.11g Orthogonal Frequency Division Modulation
- Receiver Sensitivity: 54Mbps: Typical -70dBm @ 10% PER (Packet Error Rate)
- Transmitting Power: 15dBm typically @ 802.11g
- Frequency Range: 2412 ~ 2484 MHz ISM band (channels 1 ~13)
- Ports:
 - > LAN: 4 x 10/100Mbps Auto-MDIX Fast Ethernet port
 - > WAN: 1 x 10/100Mbps Auto-MDIX Fast Ethernet port
- DC Inputs: 7.5VDC/1A
- Power Consumption: – 5W (Max)
- Operating temperature: 0° ~ 40°C
- Humidity: 10% ~ 90%

Contact Us

For more information on our products and solutions, please contact us at inquiry.gp@greenpacket.com

About Green Packet

Green Packet is a leading developer of Next Generation Mobile Broadband and Networking Solutions. We provide comprehensive, innovative and customizable telecommunications solutions in the field of seamless mobility, unified communications, monitoring solutions and content delivery platforms. Additionally, our product portfolio includes best-in-class devices that provide optimum performance and support various wireless technologies including GPRS, 3G, HSPA, LTE and WiMAX.

Green Packet's products and solutions empower Fixed Line, Mobile, VoIP and WiMAX Operators to offer a better end-user experience, while accelerating time-to-market and gaining first mover advantage.

greenpacket

always best connected

www.greenpacket.com

San Francisco · Kuala Lumpur · Singapore · Shanghai · Taiwan · Sydney · Bahrain · Bangkok · Jakarta